

POLICY FELLOWS

Paul Adams
Ph.D.
Fort Hays State University
College of Education

Micki Armstrong
M.S.
Fort Hays State University
Coordinator/Mediator
Family Development Services

Emily Breit
Ph.D.
Fort Hays State University
Economics, Finance, and Accounting

Curt Brungardt
Ph.D.
Fort Hays State University
Leadership Studies

Keith Campbell
Ph.D.
Fort Hays State University
Sociology

Melissa Dixon
B.A.
Hays Convention & Visitors Bureau

Larry Dreiling
M.S.
High Plains Journal

Robert Duffy
M.A.
Fort Hays State University
Drug and Alcohol Wellness Network

Nathan Elwood
M.A.
Fort Hays State University
Forsyth Library

W. Trey Hill
Ph.D.
Fort Hays State University
Psychology

Placido A. Hoernicke
M.F.A., Ed.D.
Fort Hays State University
Special Education (Emeritus)

Thomas Johansen
Ph.D.
Fort Hays State University
Economics, Finance, and Accounting

Scott R. Jones
Ed.S.
Fort Hays State University
Business Education

Richard Lisichenko
Ph.D.
Fort Hays State University
Geosciences

Paul Lucus
Ph.D.
Fort Hays State University
Criminal Justice

Deborah Ludwig
M.S.
Fort Hays State University
Forsyth Library

Jean Majercin
M.P.S.
Fort Hays State University
Sociology

Mary Martin
Ph.D.
Fort Hays State University
Applied Business Studies

Kate McGonigal
Ph.D.
Fort Hays State University
Sociology

Shala Mills
J.D.
State University of
New York-New Palz
Political Science

Lori Peek
Ph.D.
University of
Colorado-Boulder
Sociology

Kevin A. Shaffer
M.S., C.C.D.P.
Fort Hays State University
Informatics

Kevin L. Smith
J.D.
University of Kansas
University Libraries

Michael A. Smith
Ph.D.
Emporia State University
Political Sciences

Greg Weisenborn
Ph.D.
Fort Hays State University
Management

DOCKING INSTITUTE STAFF

Student Research Interns
Catherine Pickle
Claire Schmitt

Survey Center Student Supervisors
Samuel Ayers
Shayla Cochran
Lexis Jeffery
Luis Montelongo
Katie Schlegel

Student Research Assistants
Susan Hornbaker
Bethany Lennemann
Ryan Swayne
Keegan Weber
Brianna Witchey



Michael Walker
M.S.
Director
Assistant Director



Jian Sun
Ph.D.
Assistant Director
Research Scientist



Lynette Ottley
B.A.
Administrative
Specialist



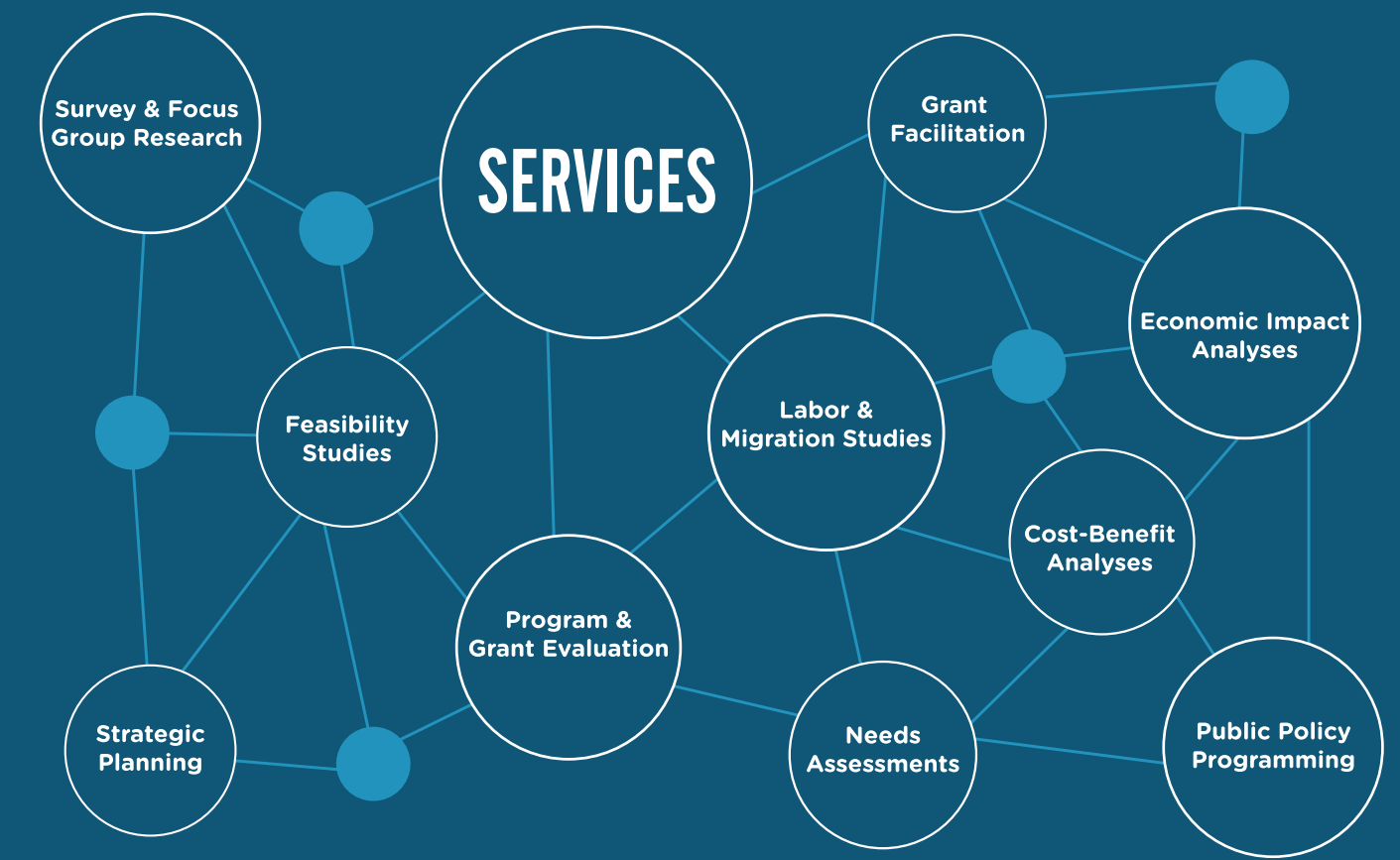
Luis Montelongo
M.B.A.
Survey Center
Research Coordinator



Gary Brinker
Ph.D.
Director
2008 - 2017



Bradley Pendergast
M.P.A.
Research Coordinator
2014 - 2017



SENIOR FELLOWS



Larry Gould, Ph.D.
Fort Hays State University
Chair – Political Science
Docking Institute
Founder & Director
1984 - 1991



Mark Bannister, J.D.
Fort Hays State University
Dean – Robbins College of
Business & Entrepreneurship
Docking Institute Director
1993 - 1998



Joseph Alstrup, Ph.D.
Auburn University
Dean – College of Liberal Arts
Docking Institute Director
1999 - 2001



Brett Zollinger, Ph.D.
Fort Hays State University
Chair – Sociology
Docking Institute Director
2002 - 2008



Leslie Paige, M.S., Ed.S.
Fort Hays State University
Director – Office of Scholarship
& Sponsored Projects



Carl Parker, Ph.D.
Fort Hays State University
Emeritus – Economics



Chapman Rackaway, Ph.D.
University of West Georgia
Chair – Political Science

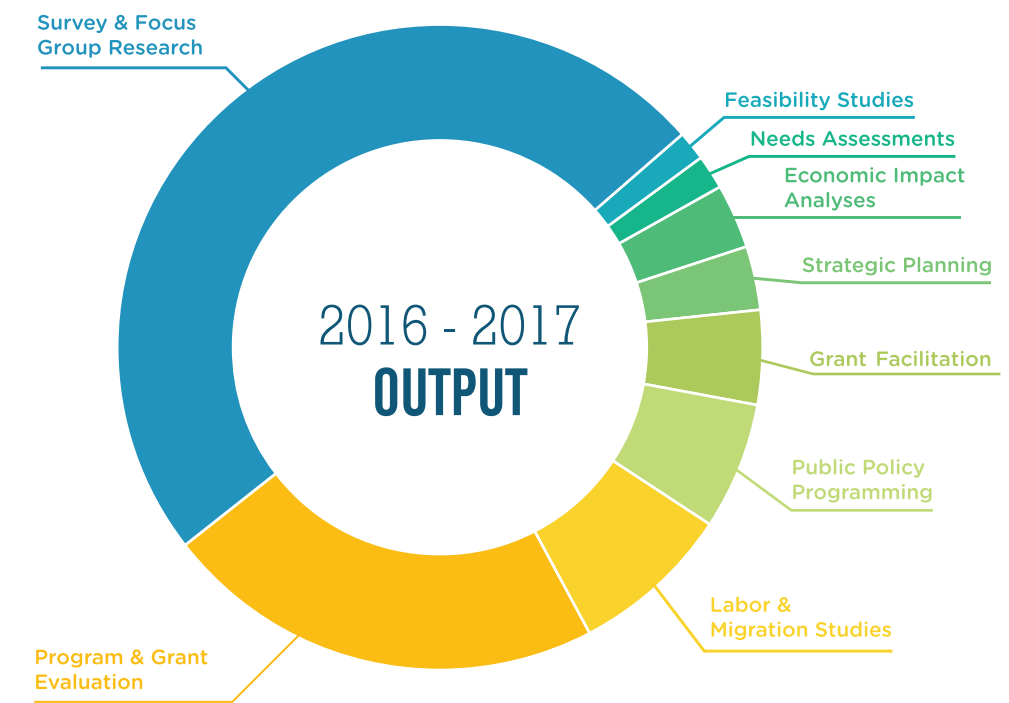


Preston Gilson, Ph.D.
Fort Hays State University
Emeritus – Finance



Our Mission

To facilitate effective public policy decision-making among governmental and non-profit entities



PROGRESS REPORT

2016 - 2017



2016 CLIENT LIST

*** Economic Impact Study
President's Office
Fort Hays State University**
Estimate the economic impact of Fort Hays State University on the local economy

*** Economic Impact Study
Salina Airport Authority
Salina, Kansas**
Estimate the effect of airport commerce and wages on the economic health of the greater Saline County area

*** Feasibility Study
City of Leadville, Colorado**
Feasibility study to explore politically and legally feasible options for consolidating or reorganizing the administrative duties of Lake County and the city of Leadville

*** Grant Writing
Arts & Memories Museum
Manhattan, Kansas**
Grant facilitation services including research and grant proposal writing for a building restoration project

*** Labor Study
Jefferson City Area Chamber of Commerce, Missouri**
Telephone survey to assess labor force availability in an 11-county region including and surrounding Cole County, Missouri

*** Program Evaluation
Arizona Supreme Court
Phoenix, Arizona**
Data processing and analysis for the Arizona Judicial Performance Review Program

*** Program Evaluation
College of Education
Fort Hays State University
Kansas Academy of Mathematics & Science**
Formative evaluation, using Web surveying and focus groups with KAMS students and parents

*** Program Evaluation
Unified School District 489
Fort Hays State University
Mathematics and Science Partnership Program**
Experimental study (pre/post-test with a control group) using Web survey data to assess increases in learning and achievement attributed to the program intervention

*** Program Evaluation
College of Education
Fort Hays State University
Istation**
Data analysis and report editing services for the Istation evaluation team



*** Program Evaluation
National Science Foundation
Fort Hays State University
Noyce Scholarship Grant Program**
Formative evaluation, including Web surveying, interviews, and focus-groups of participants as they pursue their science degrees and begin teaching in high-need areas

*** Program Evaluation
Office of Student Affairs
Fort Hays State University**
Web survey to provide process and outcome evaluation of a tobacco usage grant

*** Program Evaluation
State Library of Kansas
Topeka, Kansas**
Focus group research to assess the impact that Library Services and Technology funds have had on the citizens of Kansas and Kansas libraries

*** Program Evaluation
Unified School District 489
Early Childhood Connections
Hays, Kansas**
Evaluation of the District's Early Childhood Connections program to establish empirical evidence of its success in better preparing children with the academic and social skills needed to succeed in public schools

*** Public Policy
Kansas County Treasurer's Association**
Online course instruction in 11 topic areas related to the duties, responsibilities, and the operation of a county treasurer office

*** Public Policy
Kansas County Treasurer's Association**
Vetting and certification services for KCTA

*** Public Policy
Smoky Hill Public Television**
Moderated television show "The Kansas Legislature" featuring Kansas legislators

*** Survey Research
American Civil Liberties Union
Wichita, Kansas**
Telephone survey to measure the opinions & policy preferences regarding injustice



*** Survey Research
City of Phillipsburg, Kansas**
Telephone survey to identify the public's priorities for city improvement projects and collect secondary information critical for strategic planning

*** Survey Research
City of Sedona, Arizona
(with Burns & McDonnell)**
Telephone survey consultation, data collection, and data file delivery services to the city to assess behaviors and opinions of city residents with regard to solid waste removal

*** Survey Research
City of Springfield, Missouri
(with Burns & McDonnell)**
Telephone and survey consultation, data collection, and data file delivery services to the city to assess behaviors and opinions of city residents with regard to solid waste removal

*** Survey Research
Department of Agronomy
Kansas State University
Great Plains Grazing**
Web, postal, and telephone surveys of land owners engaged in livestock production in Kansas, Oklahoma, and Texas

*** Survey Research
Department of Chemistry
Fort Hays State University**
Web survey to assess qualifications, curriculum and teaching methods of high school chemistry teachers

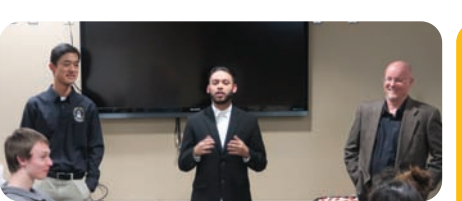
*** Survey Research
Jewell County Community
Development Association
Mankato, Kansas**
Telephone survey to measure potential demand and community support for building an assisted living facility

*** Survey Research
Kansas Board of Regents
Council of Faculty Senate
Presidents, Topeka, Kansas**
Web survey of university faculty and staff regarding opinions on Kansas gun policies

*** Survey Research
Kansas Board of Regents
Student Advisory Council
Topeka, Kansas**
Web survey of university and college students regarding their opinions on Kansas gun policies

*** Survey Research
Kansas City Star, Springfield
News Leader, Columbia Daily
Tribune, News Tribune,
Columbia Examiner, St. Louis
Post Dispatch, St. Joseph
News-Press, Joplin Globe,
Southeast Missourian and The
Monet Times**
Telephone survey to assess political poll participation

*** Survey Research
Kansas Department of Health
and Environment, Bureau of
Community Health Systems,
Office of Primary Care & Rural
Health, Topeka, Kansas**
Web and telephone survey of primary care and dental health practices throughout the state of Kansas to determine Health Professional Shortage Designation areas



*** Survey Research
Kansas Small Business
Development Center
Topeka, Kansas**
Web and telephone survey to collect financial impact data and client satisfaction data from KSBDC clients

*** Survey Research
Kansas Speaks**
Telephone survey of citizens of Kansas to assess opinions and attitudes about public policy, public issues, and elected officials

*** Survey Study
RTI International, Research
Triangle Park, North Carolina
Feeding Infants & Toddlers
Study**
Telephone survey of 4,400 parents to assess feeding and lifestyle behaviors

*** Survey Research
State Technical College of
Missouri, Linn**
Telephone survey to assess the needs of manufacturing employers

*** Survey Research
St. Louis Community College
St. Louis, Missouri**
Telephone survey providing information for the 2016 Missouri workforce assessment

*** Survey Research
Unified School District 489
Hays, Kansas**
Telephone survey of registered voters in the USD 489 service area to gather opinions about a recently failed bond election

*** Grant Writing
Great Plains Nurse Practitioner
Society**
Grant facilitation services to secure funding for research assessing nursing shortage in western Kansas

*** Impact Study
Kansas Water Office, Topeka
and Norton City/County
Economic Development,
Norton, Kansas**
Quantify the value of water stored in Keith Sebelius Reservoir due to contract payments

*** Labor Study
Central Missouri Economic
Development Alliance
Warrensburg, Missouri**
Telephone survey to assess labor force availability in five labor basins in the west central region of Missouri

*** Labor Study
City of Chillicothe, Missouri
(with Rumery and Associates)**
Telephone survey to assess labor force availability in a 13-county area including and surrounding Chillicothe, Missouri



*** Labor Study
Ellis County Coalition
Hays, Kansas**
Telephone survey to assess labor force availability in a nine-county area including and surrounding Ellis County, Kansas and provide analysis of questions assessing child care related issues

*** Labor Study
Jefferson City Area Chamber of
Commerce, Missouri**
Telephone survey to assess labor force availability in a 10-county region in central Missouri

*** Needs Assessment
City of Hays, Kansas**
Data analysis of key demographic, housing, and economic factors to assess housing needs in Hays

*** Program Evaluation
College of Education
Fort Hays State University
Kansas Academy of
Mathematics & Science**
Formative evaluation, using Web surveying and focus groups with KAMS students and parents

*** Program Evaluation
Arizona Supreme Court
Phoenix, Arizona**
Web survey, data processing, and analysis for the Arizona Judicial Performance Review Program

*** Program Evaluation
College of Education
Fort Hays State University
Istation**
Data analysis and report editing services for the Istation evaluation team

*** Program Evaluation
College of Education
Fort Hays State University
Mathematics and Science
Partnership Program**
Experimental study (pre/post-test with a control group) using Web survey data to assess increases in learning and achievement attributed to the program intervention

*** Program Evaluation
National Science Foundation
Fort Hays State University
Noyce Scholarship Grant Program**
Formative evaluation, including Web surveys, interviews, and focus groups of participants as they pursue their science degrees and begin teaching in high-need areas

*** Program Evaluation
Unified School District 489
Early Childhood Connections
Hays, Kansas**
Evaluation of the district's Early Childhood Connections program to establish empirical evidence of its success in better preparing children with the academic and social skills needed to succeed in public schools

*** Public Policy
Kansas County Treasurer's
Association**
Online course instruction on 11 topic areas related to the duties, responsibilities, and the operation of a county treasurer office

*** Public Policy
Kansas County Treasurer's
Association**
Vetting and certification services for KCTA

*** Public Policy
Smoky Hill Public Television**
Moderated television show "The Kansas Legislature" featuring Kansas legislators

*** Strategic Planning
Alumni Association
Fort Hays State University**
Facilitate SWOT analysis and establish organizational goals

*** Strategic Planning
College of Education
Fort Hays State University**
Facilitate SWOT analysis and establish organizational goals

*** Survey Research
City of Salina, Kansas**
Postal survey consultation, data collection, data analysis, and report writing to assess behaviors and opinions of city residents with regard to solid waste removal

*** Survey Research
Drug and Alcohol Wellness
Network
Fort Hays State University**
Campus survey measuring key demographic characteristics and self-reported personal usage of various drugs and alcohol

*** Survey Research
Kansas Department of Wildlife
and Parks, Topeka, Kansas**
Postal survey consultation, data collection, data analysis, and report writing to assess behaviors and opinions of Kansas landowners about deer populations

2017 CLIENT LIST

*** Survey Research
Kansas Small Business
Development Center
Topeka**
Web and telephone survey to collect financial impact data and client satisfaction data from KSBDC clients

*** Survey Research
Kansas Speaks**
Telephone survey of citizens of Kansas to assess opinions and attitudes about public policy, public issues, and elected officials

*** Survey Research
Office of Administration and
Finance, Fort Hays State
University - University
Support Staff/Unclassified
Professional Staff**
Web poll to assess USS/UPS opinions on university policies

*** Survey Research
RTI International, Research
Triangle Park, North Carolina
Food for Health Study**
Data collection through telephone survey of diabetics in the Chicago metro area for RTI's glycemic control evaluation project

*** Survey Research
Unified School District 306
Gypsum, Kansas**
Postal survey to measure voters opinions on a prospective bond initiative

*** Survey Research
Unified School District 466
Scott City, Kansas**
Postal survey to measure voters opinions on a prospective bond initiative



In the wise words of Benjamin Franklin, "an investment in knowledge pays the best interest." Knowledge begins with good information, and the best information comes from valid and reliable data. The Docking Institute of Public Affairs has a long history of providing trusted information to community, non-profit, and governmental decision-makers. Institute staff and fellows are proud of the work we do, and are pleased to provide you with our 2016-2017 progress report.

2016 and 2017 proved to be a very successful time for the Institute. We worked with more than 60 clients, designing research projects, conducting telephone, on-line, and postal surveys, facilitating focus groups and strategic planning sessions, performing economic impact studies, writing grant proposals, evaluating grant-supported programs and projects, performing data analyses, moderating "The Kansas Legislature" on Smoky Hill Public Television, conducting Kansas Speaks, and much, much more.

2017 represented a year of change for the Institute. Michael Walker and Dr. Jian Sun were promoted to director and assistant director, respectively. Dr. Gary Brinker and Bradley Pendergast left to pursue other opportunities - Gary transitioned to a full-time teaching position, while Brad is now the city administrator with the city of Oakley, Kansas. We greatly appreciate their service to the Institute, and hope to build upon their successes here.

We also welcomed Luis Montelongo back to the Institute. Luis had previously held the positions of survey center interviewer and survey center supervisor. After completing his M.B.A with an emphasis in human resources management, he returned to the Institute in December 2017 to serve as our new survey center research coordinator.

Our 2016-2017 progress report represents change as well. We hope you agree that our new, concise report provides an attractive and informative overview of our services and output during the past two years.

While we may have a new look and new approach, our mission remains the same. We are committed to providing trusted information and knowledge, allowing for effective public policy decision making for the betterment of the citizens of Kansas and the greater region.

We invite you to review our 2016-2017 progress report and visit our Web site (www.fhsu.edu/docking/). If visiting Hays, please stop by for a tour of our facilities.

Michael S. Walker
Michael S. Walker, M.S.
Director

Jian Sun
Jian Sun, Ph.D.
Assistant Director