



FACULTY EXHIBITION

INSPIRED INVENTIVE EXPRESSIVE UNIQUE INTUITIVE

*Artful Evening:*  
OPENING RECEPTION  
SEPTEMBER 13  
6-8 PM

SEPTEMBER 13 - OCTOBER 25, 2024

SCHMIDT FOUNDATION CENTER FOR ART & DESIGN, FORT HAWK UNIVERSITY

MOSS-THORNS GALLERY OF ART





*Absence*

Brittany Gorelick

Monoprint

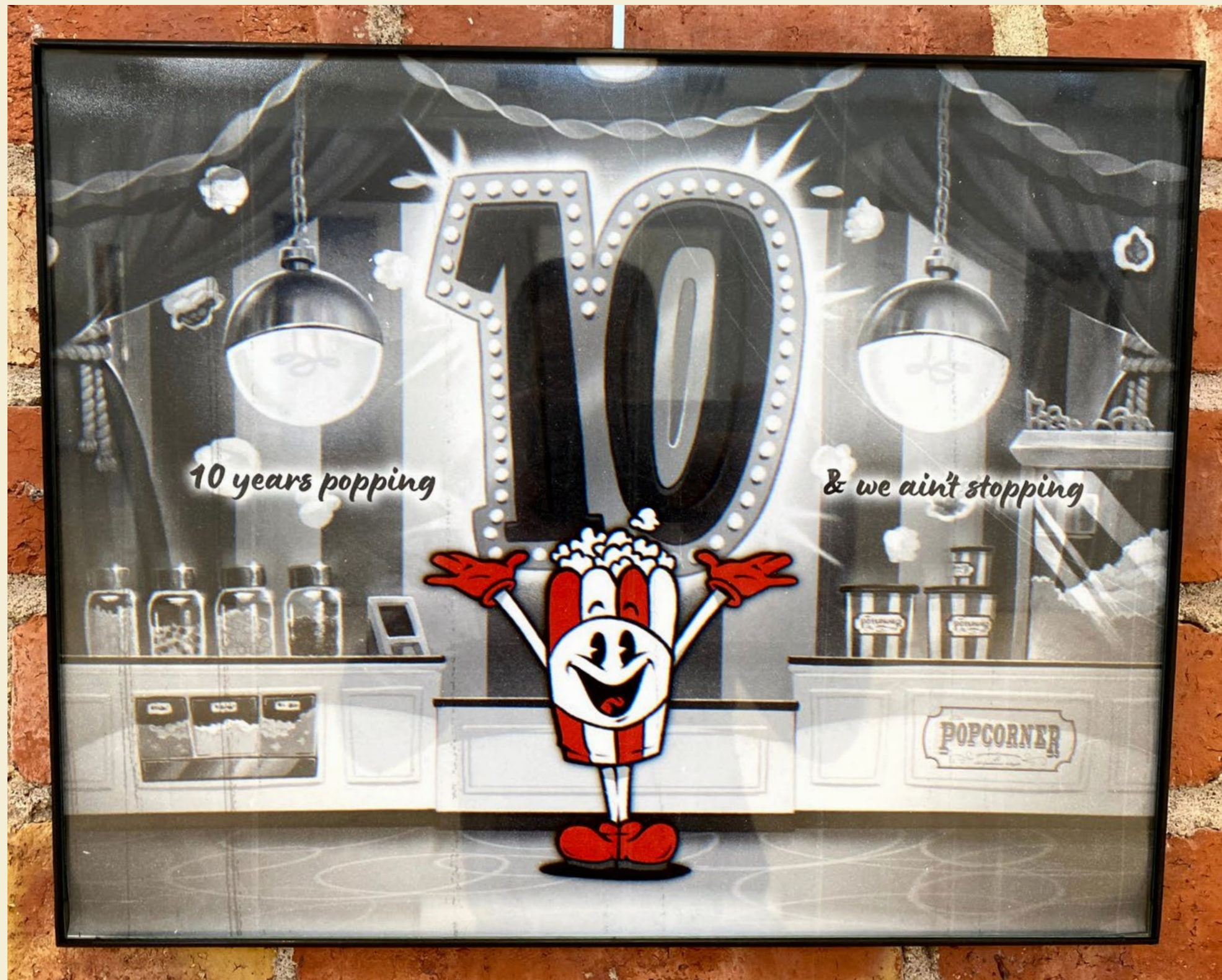
2024

*Presence*  
Brittany Gorelick  
Monoprint  
2024





Small white label on the middle pedestal with illegible text.



*Various Popcorn Illustrations*

Thomas Giebler

Digital Illustration



*Various Popcorn Tin Illustrations*

Thomas Giebler

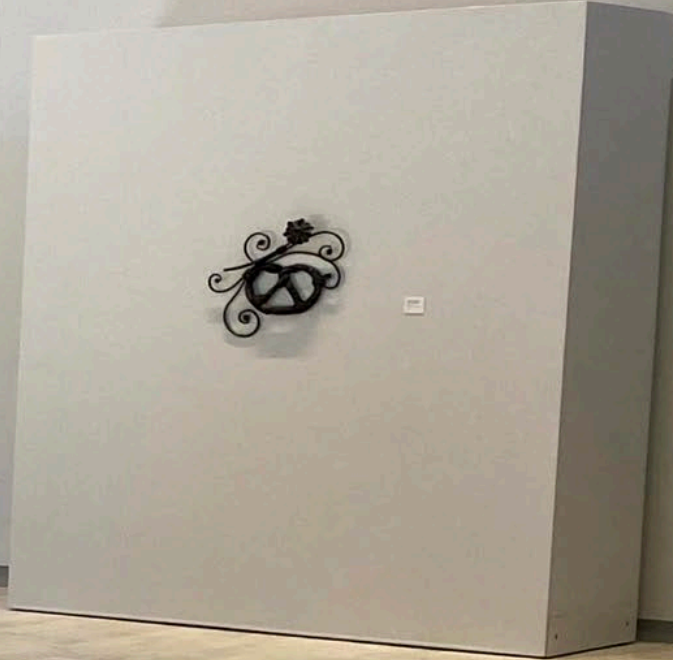
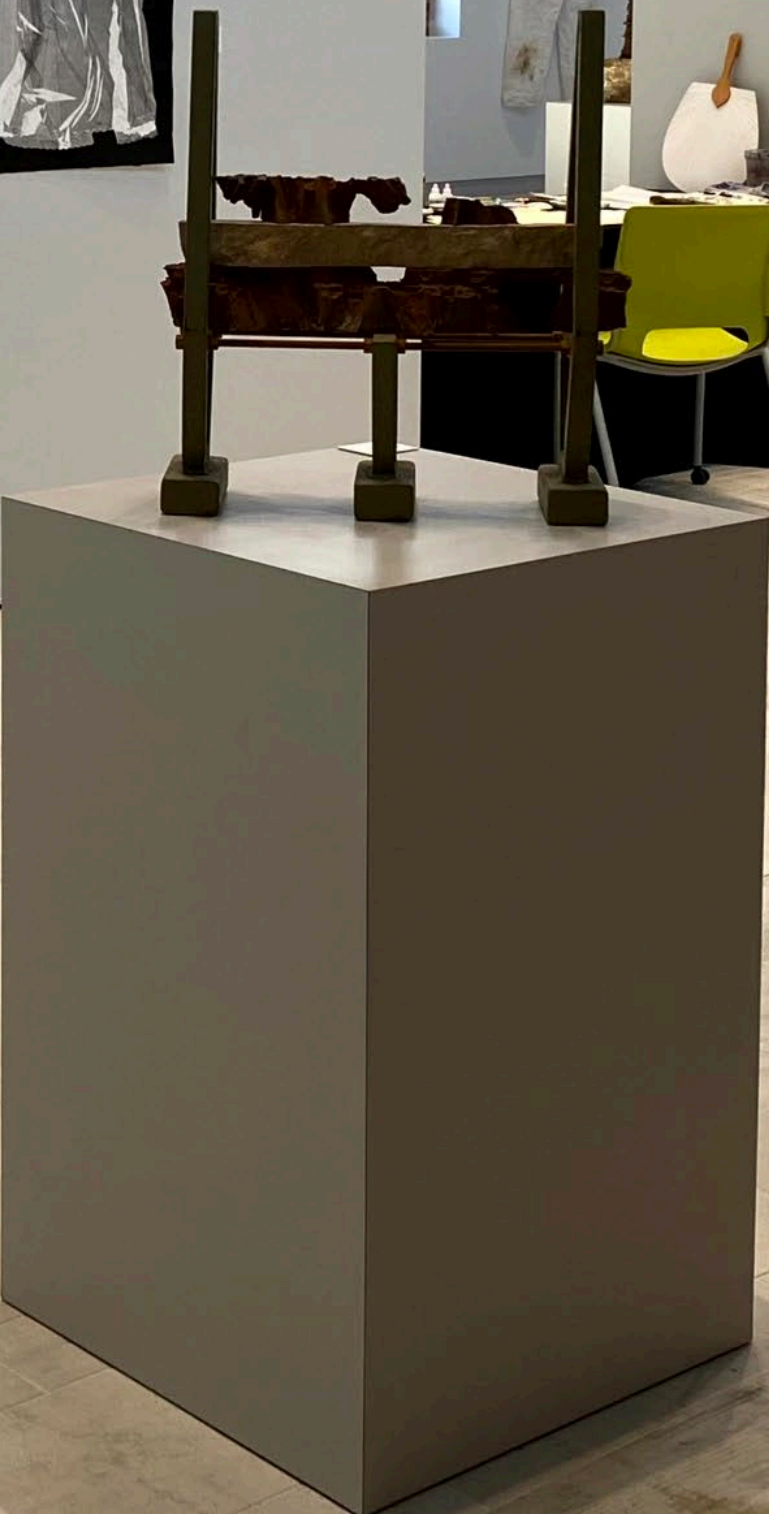
Digital Illustration

*Various Popcorn Illustrations*

Thomas Giebler  
Digital Illustration









*Vulnerable Suspension*

Danielle Robinson

Cast Iron, Steel Limestone

21 ¼" x 20" x 7 ½"

*Ghost*  
Brittany Gorelick  
Monoprint  
2024



*Nature's Detail*  
Farheen Khan  
Copper Wire, Beads  
and Rocks





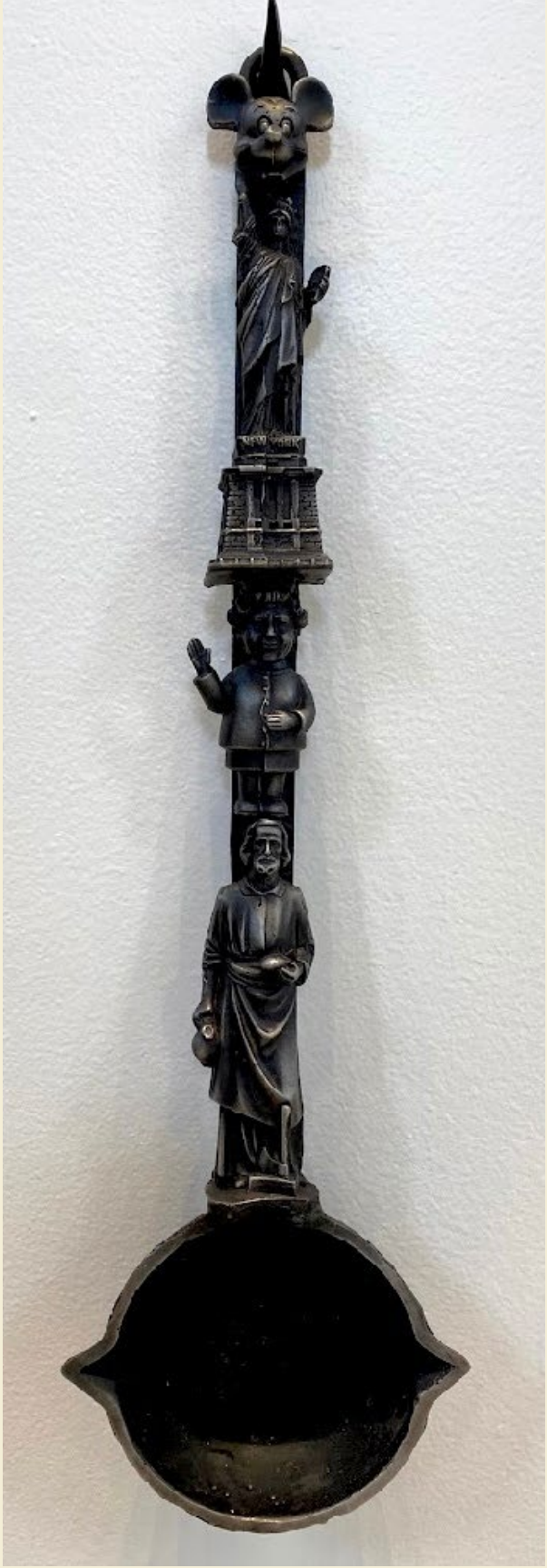
*Pepper*

Chaiwat Thumsujarit

Cinema 4D, Adobe Firefly



*Ladles*  
Toby Flores  
Stainless Steel





*Wired Nature*  
Farheen Khan  
Copper Wire, Beads and Rocks





*Underwire / Soft Cup*

Brittany Gorelick

Monoprint

2024

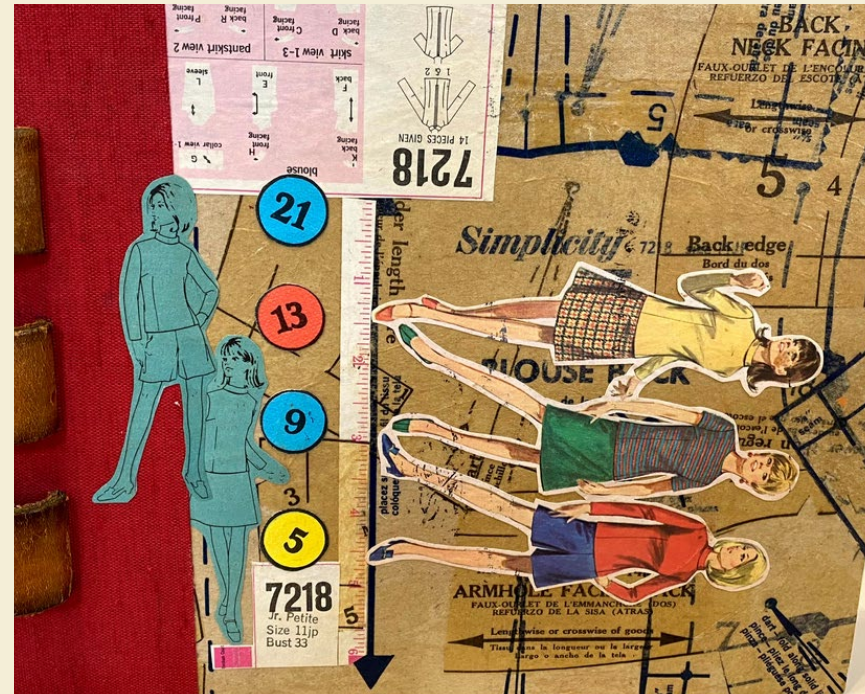


*DHarvest*  
Brian Hutchinson  
Gum Bichromate





*Leather Paper Stitch  
A Collective Exploration  
in Bookbinding*  
Marie Perle (1915-2019)  
Mixed Media: Paper, Cloth, Fabric  
Made in leather, paper, cloth, fabric  
Handmade in New York City  
1970s  
1970s



*Leather, Paper, Stitch, A Collective  
Exploration in Bookbinding*

Karrie Simpson-Voth

Mixed Media



RIGGER

AP

GORELICK '24

*Rigger*

Brittany Gorelick

Woodcut

2024



*Hazardous Drought Conditions*

Danielle Robinson

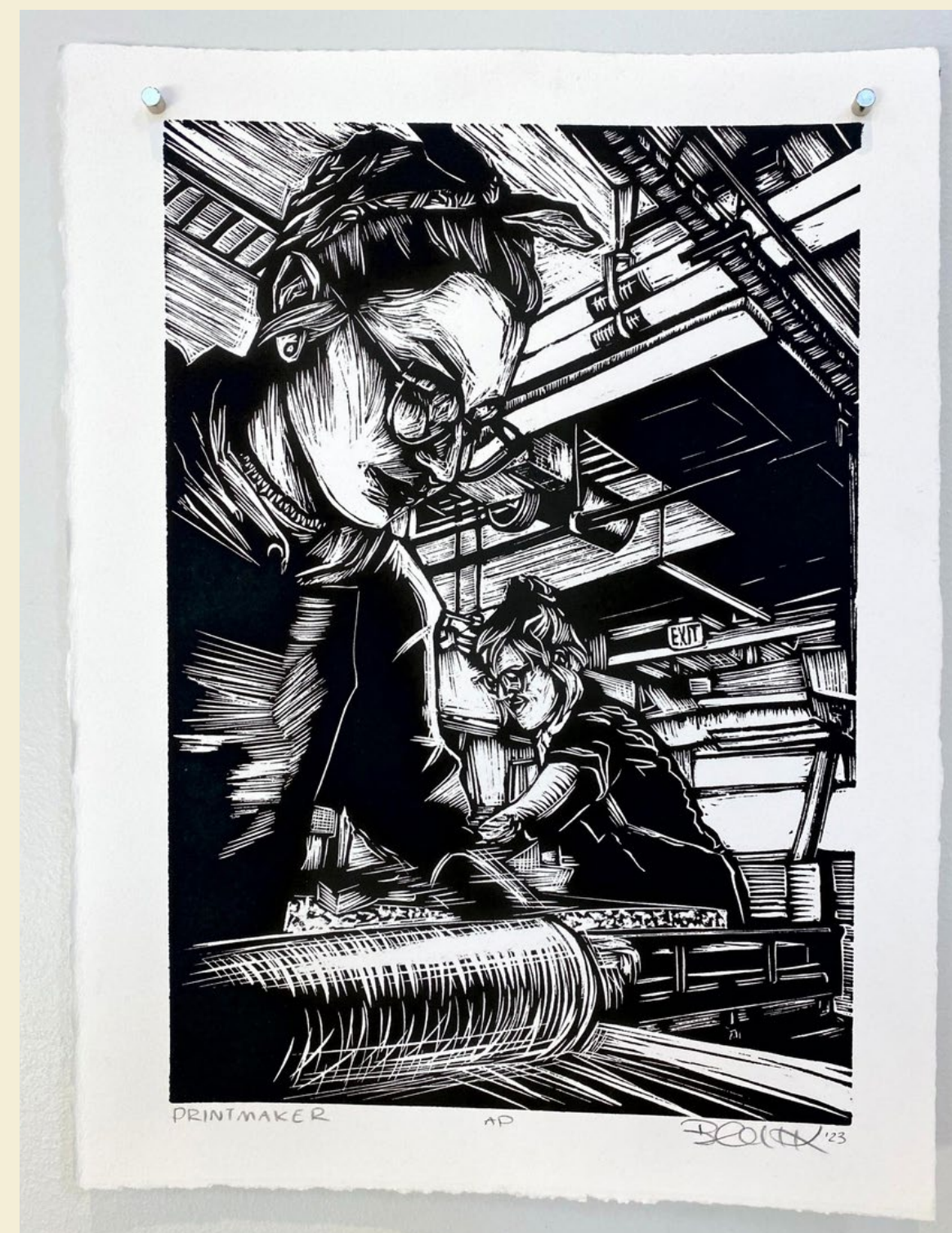
Cast Iron, Steel, Reflectors, Resin

22" x 22 1/5" x 1 1/4"





*Printmaker*  
Brittany Gorelick  
Woodcut  
2023







*Traversing Obstacles*

Danielle Robinson

Cast Iron, Steel Limestone

22 ½" x 19 ½" x 8"



*Indelible Marks: Gravel Mound*

Curt Steckel

Inkjet Print, Coveralls, Gravel

Photo: 44" x 64"



*Picken*

Thomas Giebler

Digital Illustration

*Neglige*  
Brittany Gorelick  
Monoprint  
2024





*KiteSwoop*

Brian Hutchinson

Pochoir, Cyanotype, Relief,  
and Gum Bichromate





## *Korean Painting*

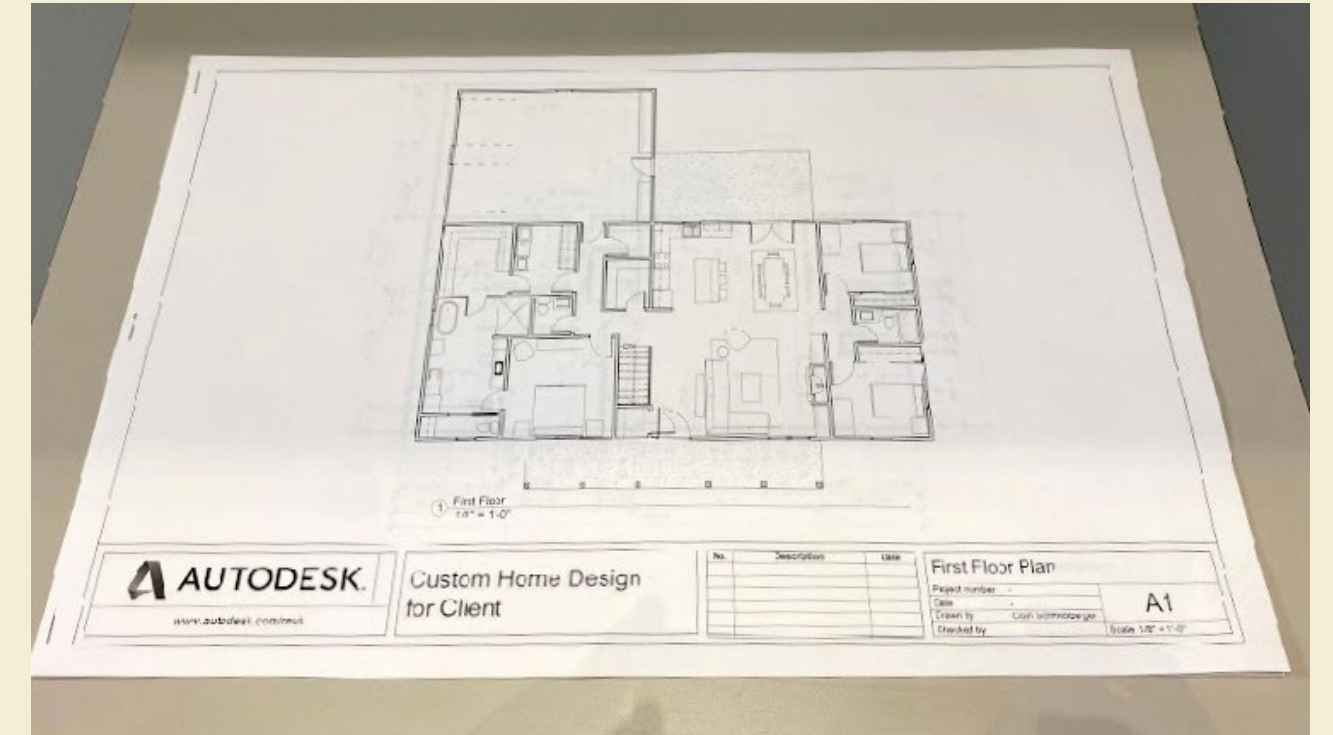
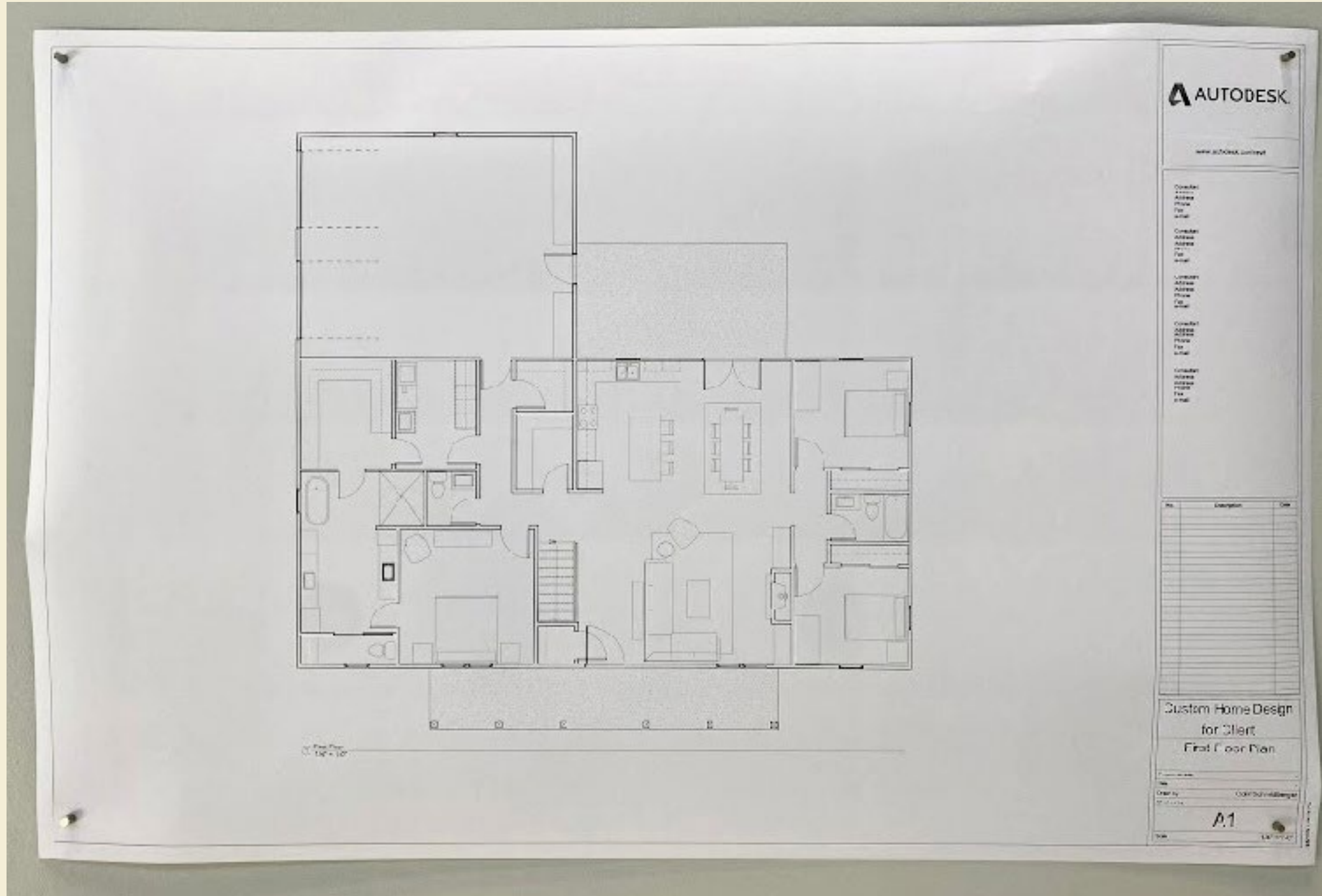
Jee Hwang

2024

### 민화 (Minhwa)

Minhwa refers to Korean folk art, created predominantly by unknown artists who lacked formal training. Literally translating to "painting of the people"

Minhwa was often crafted by anonymous artisans who faithfully adhered to traditional styles, genres, and conventions passed down through generations. Minhwa also carried a magical dimension, as these paintings were believed to offer protective virtues, safeguarding their owners from evil forces. Common themes in Minhwa include cranes, rocks, water, clouds, the sun, moon, pine trees, tortoises, insects, and flowers. As traditional Korean folk art from the Joseon era (1392–1910), Minhwa was typically painted on paper or canvas. Yoon (2020) notes, "Minhwa is a traditional art form that was intimately connected to the lives of the Korean people, so it best embodies the Korean sentiment" (p. 14).



*Custom Home Design*  
Colin Schmidtberger  
Autodesk Revit  
2024



*Negligees (Impression)*

Brittany Gorelick

Monoprint

2024



*Robbins Center*

Thomas Giebler

Digital Illustration





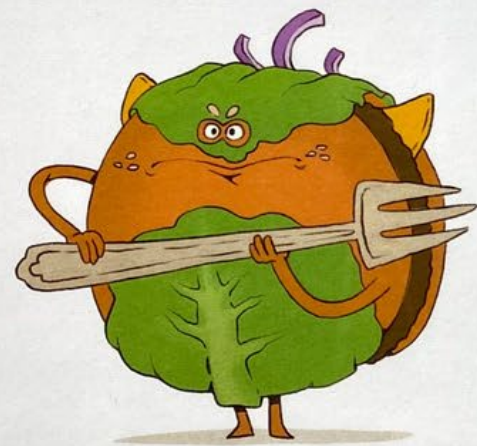
*German Pretzel and  
Kansas Sunflower*

Toby Flores

Cast Aluminum and Forged Steel

*Food Fight*  
Thomas Giebler  
Digital Illustration





Burger Brute



Mayor Stevenson



Governor Hotdog



Hotdog Guard



French Fry Fighter

## *Food Fight Character Concepts*

Thomas Giebler

Digital Illustration





*Wired Nature*

Farheen Khan

Copper Wire, Beads and Rocks

*Dive*  
Jee Hwang  
Oil on Canvas  
46"x82"  
2024





*Unmentionables*

Brittany Gorelick

Monoprint

2024



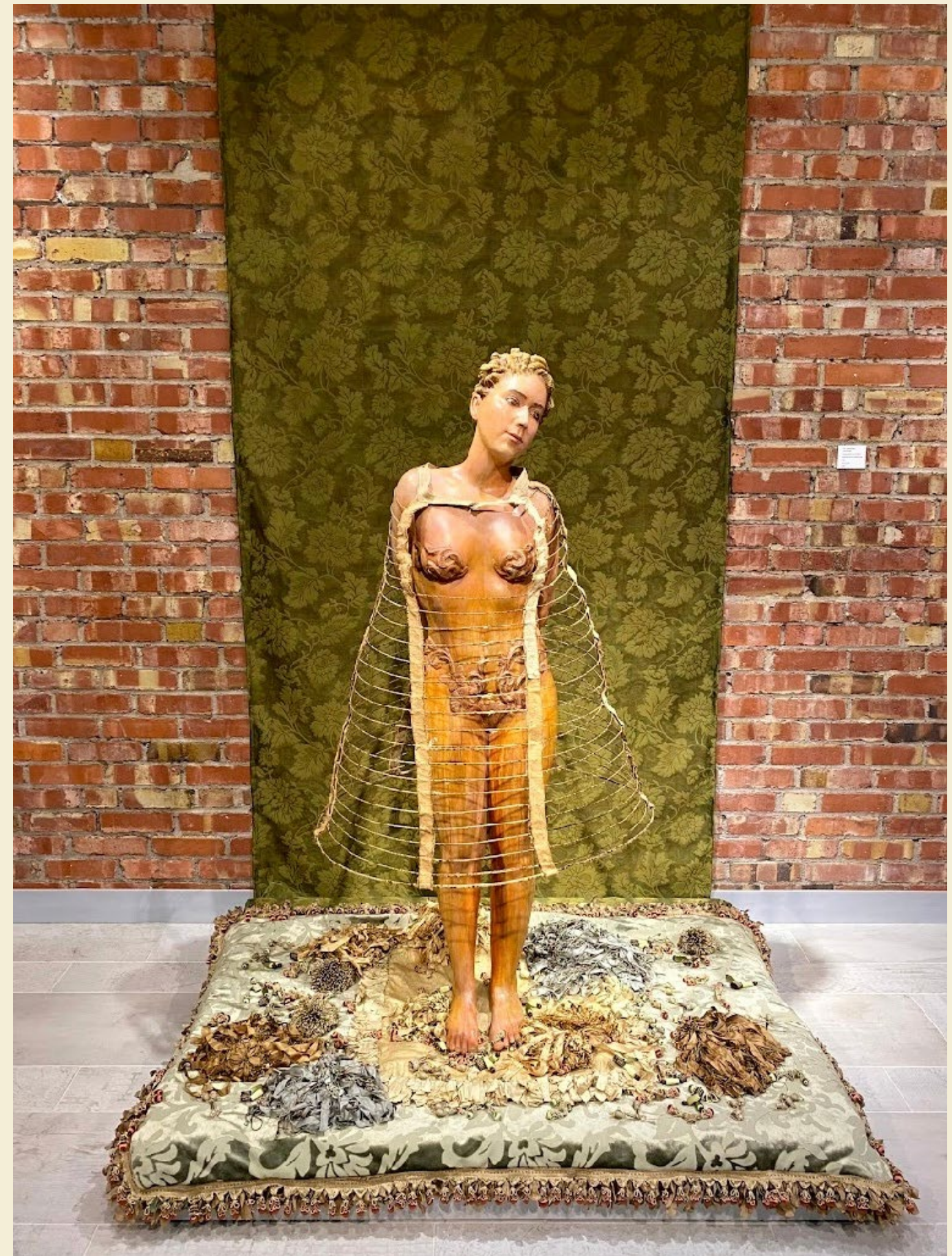
*“Still Standing”*

Linda Ganstrom

Painted Ceramic in a silk fabric installation  
with an antique hoop skirt.

10' x 6' x 3.5'

2024





*Unmentionables (Impression)*

Brittany Gorelick

Monoprint

2024

*Melon*  
Toby Flores  
Cast Iron (225 Lb.)





MT

---

FORT HAYS STATE UNIVERSITY'S  
MOSS-THORNS  
GALLERY *of* ART

& The Patricia A. Schmidt Gallery Lobby