



2023 FHSU IMPACT REPORT

Prepared by the Office of the President
and the Docking Institute of Public Affairs



FORT HAYS STATE
UNIVERSITY

FHSU delivered powerful solutions by.....

Focusing on accessible and affordable education programs *page 3*

Creating the best value in education anywhere *page 4*

Meeting the needs of today's student *page 5*

Developing real-world relevant applied learning opportunities *pages 6 - 7*

Aligning with the needs of business and industry *pages 8 - 9*

Forging future-focused value partnerships *page 10*

Driving economic prosperity in Western Kansas *page 11*

Advancing academic excellence on campus and online *pages 12 - 13*

Serving our local communities *pages 14 - 15*

Since Fort Hays State University's founding in 1902, the university has served Kansas by delivering world-class education and training and playing an integral role in the regional economy. The main campus of Fort Hays State University is located in Ellis County, with a service region that encompasses 67 counties primarily in the northern and western areas of the state.

Mission

Provide accessible quality instruction to Kansas, the nation, and the world through an innovative community of teacher-scholars and professionals to develop engaged global citizen-leaders.

Vision

Be accessible to those who seek higher education, unlocking potential aligned with the democratic, economic, and social needs of our communities, our region, and our world.



FORT HAYS STATE
UNIVERSITY

Did you know?

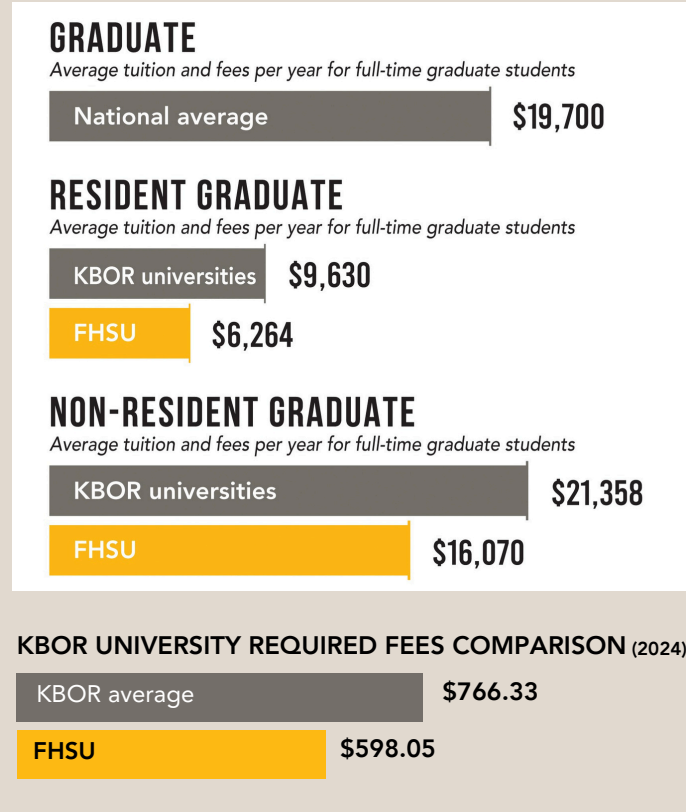
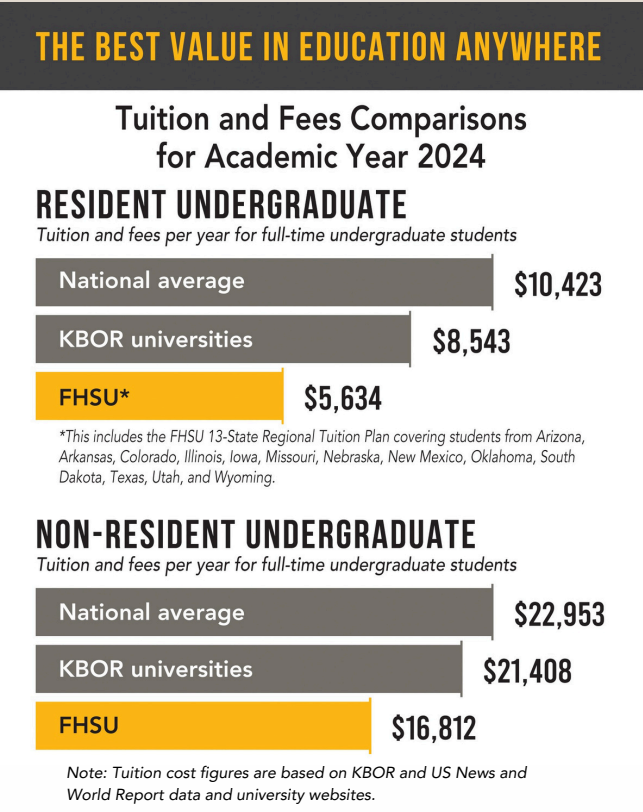
Fort Hays State University is a regional comprehensive public university with a global reach. The nearly 8,000 Kansans included in our Academic Year 2023 enrollment total comprise close to 62% of our total enrollment. Enrollment of Kansans at FHSU includes more than 5,000 from our service area and more than 2,000 from Ellis County.



Accessible and affordable education programs

The Fort Hays State model is based on meeting the evolving educational needs of today's students. We deliver affordable, flexible, and challenging academic programs on campus in Hays and worldwide through FHSU Online and our network of International Partner campuses. Fort Hays State University continues to be a national leader in providing a high-quality and accessible education.

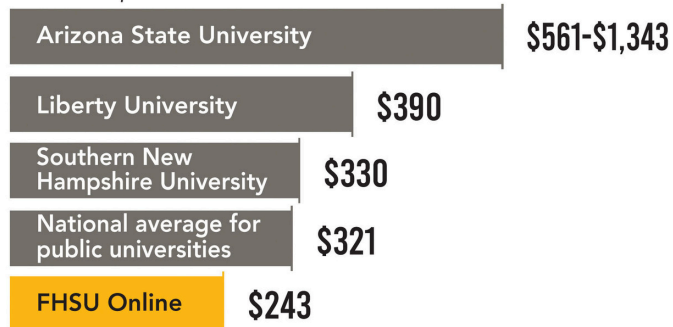
The price of an FHSU education is roughly half the national average and the most competitively priced among Kansas' four-year universities.



FHSU Online at a Glance

ONLINE UNDERGRADUATE TUITION COMPARISONS FOR ACADEMIC YEAR 2024

Tuition cost per credit hour



Note: Tuition costs listed do not include additional required fees. FHSU does not charge online students additional fees.

A GLOBAL LEADER IN ONLINE EDUCATION FOR MORE THAN 25 YEARS

FHSU is one of only five universities in the world to earn the United States Distance Learning Association's rigorous 91-point certification. U.S. News and World Report and Forbes Magazine have consistently ranked our online programs among the best in the Midwest and in the nation.



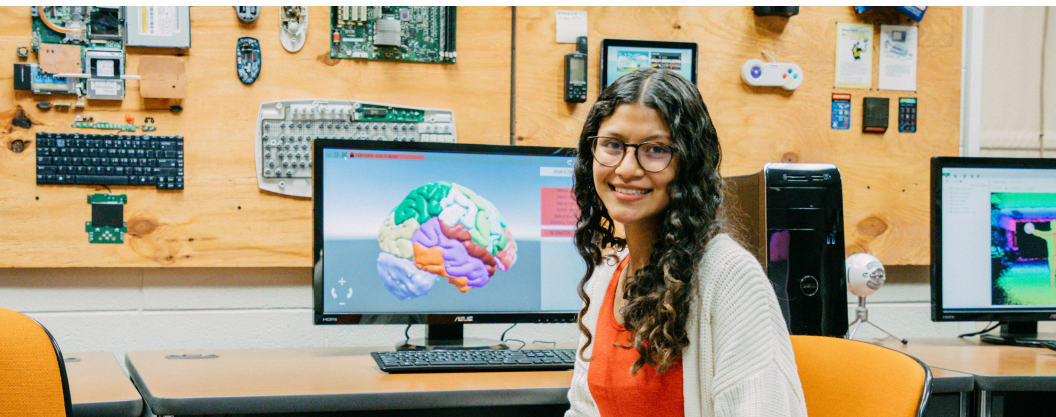
Did you know?

Approximately 49% of the university's Fall 2023 undergraduates and 91% of its graduate students enrolled exclusively as online students. (2023)

Creating the best value in education anywhere

The earning power of FHSU graduates

The Foundation for Research on Equal Opportunity (FREEOPP.org) used data from the U.S. Department’s College Scorecard on the earnings of students receiving federal financial aid from over 30,000 bachelor’s degree programs at U.S. colleges and universities. Looking across the 27 programs evaluated at FHSU, the cumulative lifetime ROI of FHSU programs provided an economic impact of more than \$1.1 billion from the students who graduated during the study period.



FHSU grads bring economic prosperity to Kansas communities

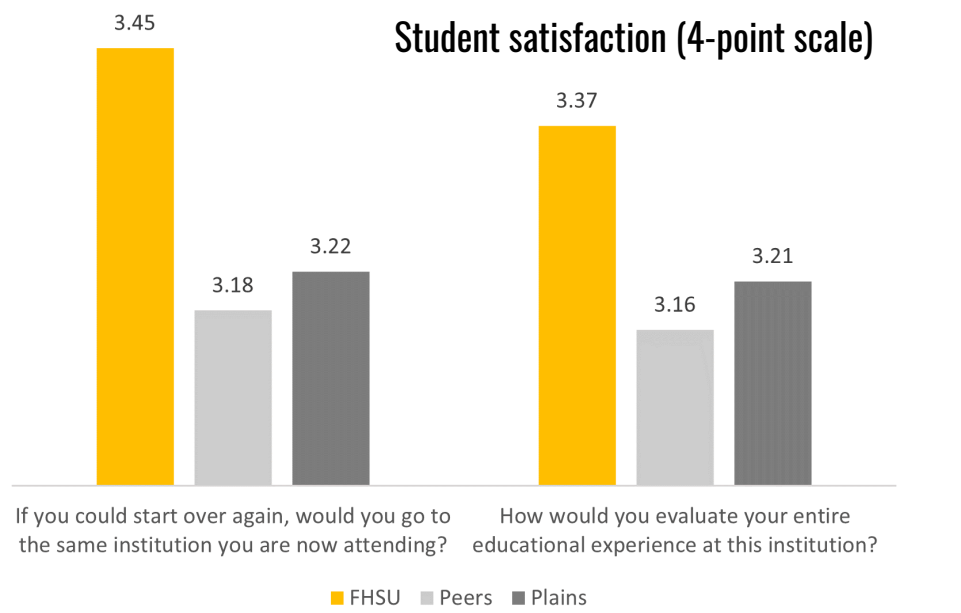
Graduates’ Wage, Employment in Kansas, and Tuition and Fees -- FHSU and Kansas Public University System in 2021

	FHSU	Kansas Public University System
Average Wage (Bachelor degree, employed in Kansas one year after graduation)	\$50,901	\$47,625
Graduates Employed in Kansas (Percentage of all graduates)	56.1%	52.8%

Source: Employment and Wages section of KBOR’s Kansas Higher Education Statistics website. The website lists the primary sources as: KHEDS Academic Year Collection, KDOL Wage Records.

Student satisfaction

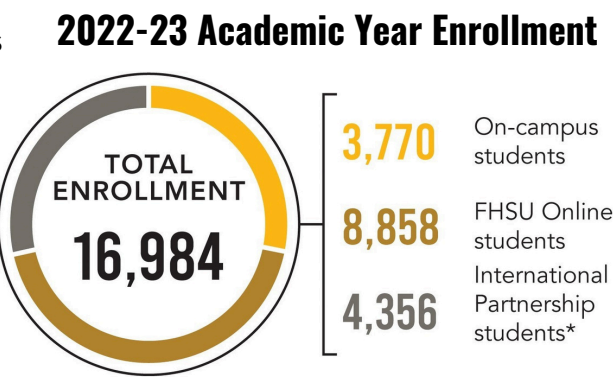
In the latest National Survey of Student Engagement (NSSE)*, FHSU seniors in 2021 expressed significant satisfaction with their experience at Fort Hays State University.



*NSSE's term "Peers" refers to FHSU's list of seven comprehensive regional public university peer institutions. The category "Plains" refers to a list of 14 institutions identified as comparable to FHSU.

Did you know?

Diversified enrollment is a major strength of the FHSU model. Our students pursue their educational goals on campus in Hays, online, and on our growing network of International Partnership campuses in Africa, Asia, and South America.



*This enrollment category includes students from our partner institutions in Bolivia, Brazil, Cambodia, China, and Senegal.

Meeting the needs of today's student

We want to create a campus community that reflects Kansas' constantly changing and evolving diversity. We are persistent and aggressive in our efforts to diversify our student population by reaching out to adult learners, first-generation students, Hispanic students, military and military-connected students, and by establishing partnerships with higher education institutions worldwide.

First-generation students



Paying it forward

First-generation student Aneth Morales-Canales graduated summa cum laude in 2021 with a bachelor's degree in psychology and a minor in Spanish. In 2022 she began work for the College Advising Corps to assist low-income, first-generation, and underrepresented college and high school students across the state of Kansas.

2022-23 ACADEMIC YEAR ENROLLMENT INCLUDES STUDENTS FROM...

- All 105 Kansas counties
- All 50 states
- 47 countries
- Every branch of the military



Did you know?

From 2010 to 2020, the Hispanic percentage of the Kansan population grew from 10.5% to 13%. Hispanics grew as a share of the population in all but 9 Kansas counties over the same time period, even as 80 of the 105 counties saw an overall population decline.

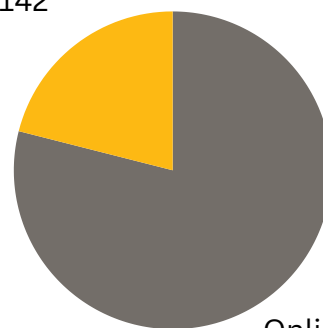
Hispanic student retention - Fall 2024

National average	63%
FHSU resident students	77%
FHSU non-resident students	84%

Source: The Topeka-Capital Journal, "Kansas' Hispanic population is growing. Here is why they still lack political power" Patrick R. Miller, August 20, 2021.

FHSU's fall 2023 enrollment included 675 military and military-connected students.

On campus
142



Online
533

Military and military-connected students

FHSU developed the **Applied Science (AAS) in Technology and Leadership** program specifically for service members and veterans. This program awards up to 30 credit hours for military training and experience. Six hours of transfer credit may also be awarded using course substitutions for common core military leadership.

FHSU pioneered efforts to meet the needs of **adult learners** beginning in the 1970s, prior to the advent of the internet, through correspondence courses and outreach efforts. At FHSU, the average undergraduate student is 24. With the robust online offerings of FHSU Online, full semester and shortened academic terms, higher education partnerships, and alignment with business and industry, FHSU is uniquely positioned to meet the evolving needs of the adult learners of today and tomorrow.

Real-world relevant applied learning opportunities

Applied learning offers many benefits, including practical skill development, real-world application of knowledge, enhanced problem-solving abilities, and a deeper understanding of one's field through hands-on activities.

The 3,825-acre **University Farm** gives agriculture students hands-on learning opportunities. Extensive beef, swine, sheep, and crop production operations immerse students in a wide range of experiences that make them job-ready on day one.



Hands-on learning

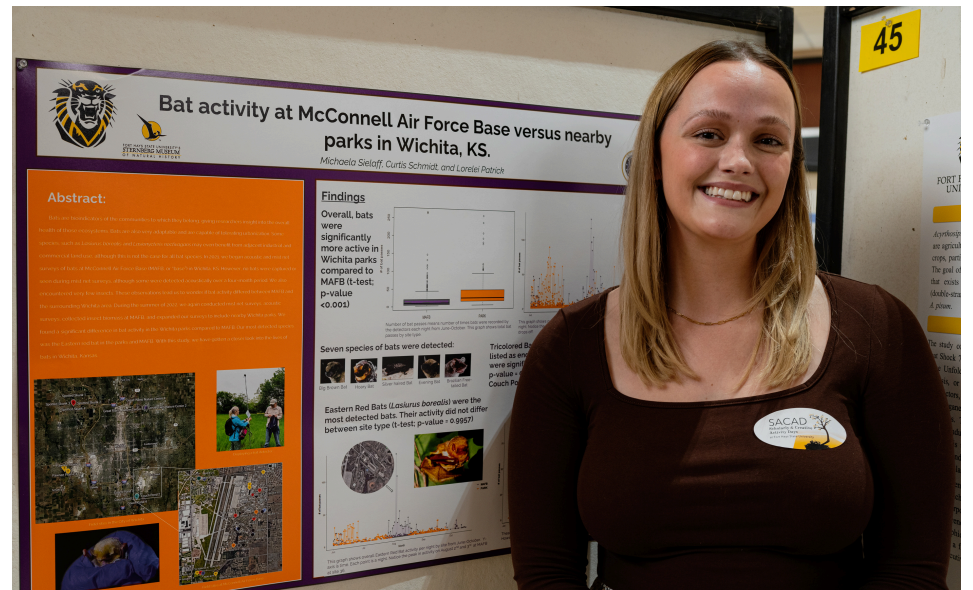
University Farm crops division manager Harland Werth (second from right) and a crew of student workers harvest wheat using a combine provided by Carrico Implement.

Did you know?

“Ag Jobs” was the theme of the second annual Western Ag Summit hosted by Fort Hays State University. The Ag Summit brings together members of the community, alumni, students, faculty, and legislators to share common concerns facing the state’s number one economic driver.



The **John Heinrichs Scholarly and Creative Activities Day (SACAD)** was started in 2005 to highlight the significant scholarly and creative work produced at the university. SACAD activities are open to faculty and students at every level and include scholarly and scientific poster presentations, oral presentations, and a creative works exhibition, which are available both on campus and online.





The **Psychological Testing Clinic** is a teaching and training clinic for master's level psychology students. Students administer psychological tests, summaries, and interpretations.

The **Herndon Speech-Language-Hearing Clinic** is a state-of-the-art clinic that provides evaluation and treatment for the people of Western Kansas. The clinic's primary purpose is to provide undergraduate students in Communication Sciences and Disorders and graduate students majoring in Speech-Language Pathology hands-on experience providing services in speech, language, and hearing.

Herndon Clinic Clients AY 2023

Speech/Language Screenings	111
Hearing Screenings	639
Aural Rehab Assessments	26
Speech/Language Evaluation	16
Individual Speech/Language Intervention	167
Group Speech/Language Intervention	199
Mobile FEES (KS)	24
Masonic Hearing Screening (KS)	167



The **Center for Empowering Victims of Gender-Based Violence (CEVGV)** is committed to addressing the challenges faced by survivors of gender-based violence, fostering economic independence, and empowering survivors to seize opportunities. CEVGV offers valuable research opportunities for both undergraduate and graduate students. Since its establishment in 2020, the center has directly involved more than 25 undergraduate and graduate students in research collaborations and information dissemination efforts with state-level agencies.

FHSU finance and accounting students and professors benefit from the use of the **Bloomberg Terminal**, which provides real-time and historical data, market-moving news, and analytics to help leading business and financial professionals worldwide make better-informed investment decisions. The Bloomberg Terminal enables students to familiarize themselves with financial services and industry tools with which students use to manage a donor-created investment fund.

Study abroad scholarship funding has increased dramatically, allowing more students to benefit from this cultural and language immersion experience. In 2023, 60 students participated in faculty-led study abroad activities and scholarship funding increased to \$66,000, a 220% increase from five years prior.

Did you know?

Approximately 5% of the state's clinical social workers practice in the western half of Kansas. The **Masters of Social Work (MSW)** degree's inaugural class of 52 students in 2020, grew to 147 in 2023, and currently has a waiting list. This year, the Department of Social Work placed 96 students in clinics and other social services agencies in 34 Kansas communities, with 82% in rural areas.

*Kansas Behavioral Science Regulatory Board (BSRB) license data

Aligning with the needs of business and industry

Strategic Affiliation - three institutions, one goal - to serve the students, businesses, and communities of rural Kansas.

FHSU recognizes the need for a trained workforce in Western Kansas but understands that not all jobs require a four-year degree. The strategic affiliation will encourage students to get the training they need to enter the job market and create a pathway for future educational opportunities. These expanded learning experiences will help businesses within our service area find the skilled employees they need – from entry-level to company leadership and technical assistance positions. The affiliation will produce a workforce with the necessary skills to grow business opportunities in rural Kansas.

I joined the strategic affiliation between NCK, NWK, and FHSU because I firmly believe it's crucial for the future of the construction and manufacturing industry to offer adaptable avenues for the emerging workforce to receive comprehensive training.”

- Brett Ottley, Design-Build Manager, Commercial Builders



June 12, 2023, Kansas Governor Laura Kelly came to FHSU to ceremonially sign House Bill 2290, the legislation that officially authorized the Strategic Affiliation Initiative.



Did you know?

The Robbins Banking Institute at FHSU provides specialized training in the principles of community banking. Through an innovative partnership, the Kansas Bankers Association, through its subsidiary, the 501(c)(3) Kansas Bankers Educational Foundation (KBEF), provides experienced leadership for the Institute.

Addressing the need for nursing professionals in rural Kansas

FHSU recently received a \$15.4 million grant to advance nursing workforce development in Western Kansas. This funding will allow us to expand the number of nursing program graduates we produce annually by 67%.

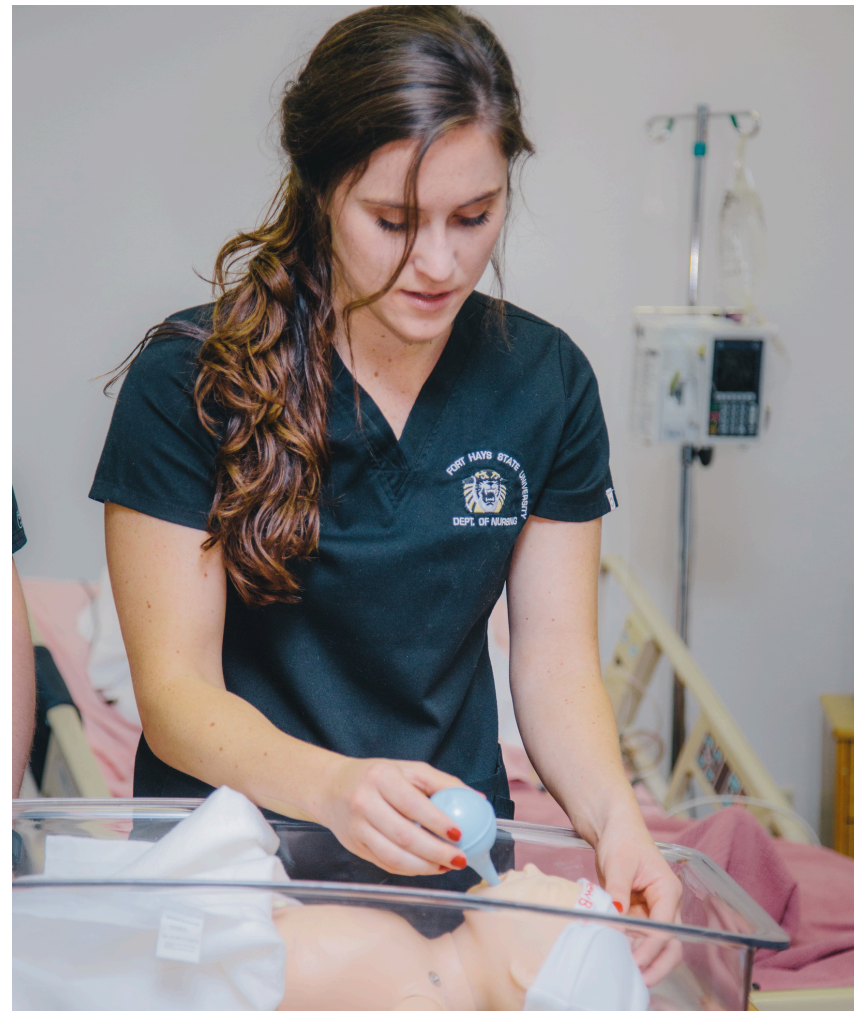
The **Department of Nursing** recently received two Health and Human Services Administration federal grants totaling more than \$4 million. These grants will help us expand the number of highly-trained nursing professionals serving in rural Kansas by providing students with monetary stipends and specialized training if they commit to practicing in a rural Kansas setting.

One grant, a 3-year \$1,499,793 U.S. Department of Health Resources and Service Administration Nurse Education, Practice, Quality, and Retention (NEPQR) grant, will be used to support expanded simulation training. Students accepted into the program who plan to pursue nursing in Western Kansas will also receive \$10,000 after completing a simulation residency in their final semester. Funding from this grant will also provide simulation training for regional community and technical college nursing faculty across rural Kansas.



Did you know?

The success of FHSU's **Doctor of Nursing Practice (DNP)** program is evident in its 100% pass rate for the 2022 National Certification Exams. DNP graduates play pivotal roles in leadership and decision-making, addressing the critical shortage of medical professionals in Western Kansas.



NEW! Guaranteed nursing program admission

Kansas community college-trained Registered Nurses (RNs) who hold an unencumbered active license and a cumulative GPA or Associate in Nursing Degree GPA equal to or greater than 2.5 will qualify.

Forging future-focused value partnerships

Fort Hays State University is dedicated to creating value partnerships that enable students to achieve their dreams efficiently. Our commitment to keeping tuition low is complemented by innovative pathways, including:



Kansas College of Osteopathic Medicine (3+4 Program):

FHSU students have the opportunity to accelerate their medical career with a 3+4 program, starting their first year of medical school during their senior year at FHSU. This collaboration allows students to earn both a bachelor's degree from FHSU and a medical degree in seven years.



FHSU and Kansas State University Dual Degree in Engineering (3+2 Program):

A select number of FHSU students can pursue degrees from both FHSU and Kansas State University in a 3+2 program. Beginning in FHSU's physics department, students benefit from hands-on learning before transferring to Kansas State for an engineering degree, offering an affordable way to earn two bachelor's degrees.



FHSU/Washburn Law Partnership (LEA Law Early Admission Program - 3+3 or 3 ½ +3 Track):

The LEA program allows outstanding undergraduates to enter law school early, starting during their senior year. This collaboration streamlines the completion of both undergraduate and law degrees, reducing time and costs. Students also engage in mentorship with Washburn Law faculty, attorneys, and judges, enhancing critical thinking and legal skills essential for law school success.



A signing ceremony with FHSU President Tisa Mason and President Tiffany Masson, College of Osteopathic Medicine, to establish a partnership to address the severe physician shortage across Kansas.

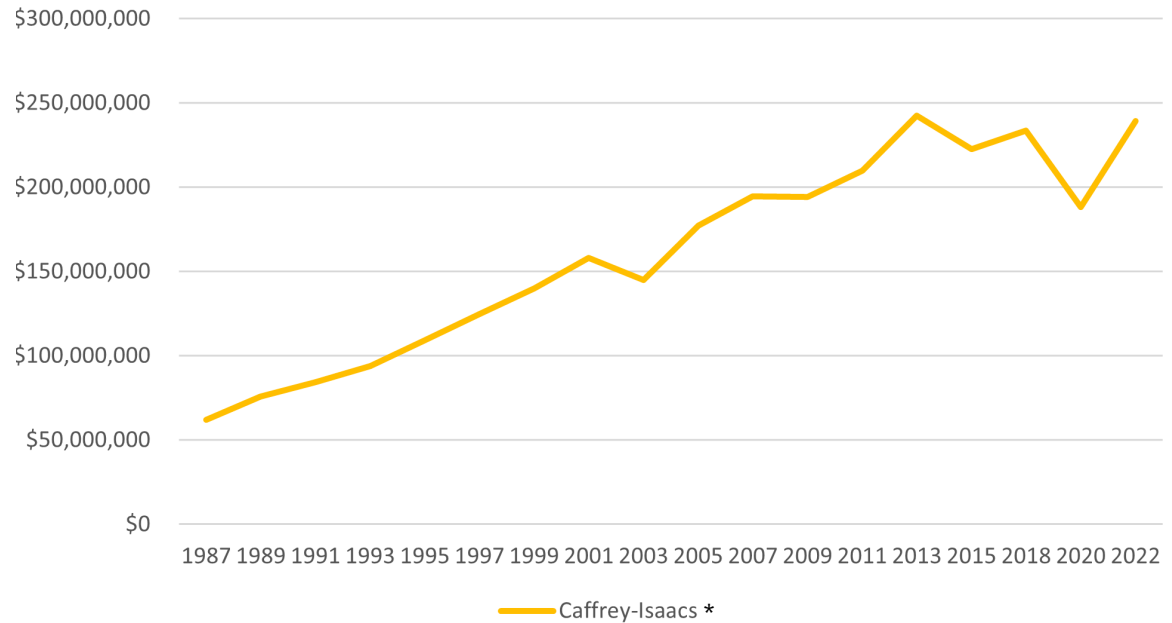
Driving economic prosperity in Western Kansas

Fort Hays State University is a significant economic driver in Western Kansas. The university contributes to regional workforce development, fosters innovation through research, attracts talent and investment, and facilitates the creation of a knowledge-based economy. In a 2022 report, the Docking Institute listed the short-run economic impact of FHSU on the local economy as between \$168 and \$239 million. For perspective, FHSU's total economic impact is approximately 11% to 16% of Ellis County's gross domestic product. Similarly, FHSU's impact on employment is about 13% of Ellis County's labor force.

With the exception of a downturn directly related to the COVID-19 pandemic, the economic impact of FHSU has grown steadily for more than three decades.



FHSU Total Economic Impact



*The Caffrey-Isaacs approach was developed in 1971 for the American Council of Education to provide a framework for estimating the economic impact of universities.

Local Economic Impact

(Caffrey-Isaacs Approach)

Direct Impact	\$ 132,889,023
Indirect Impact	\$ 26,577,805
Induced Impact	\$ 79,733,414
Total Economic Impact	\$ 239,200,242

Did you know?

FHSU students have an exemplary work ethic and are resourceful by nature. In a 2021 survey, more than 93% of the student respondents work, and more than 60% work and receive scholarship/grant assistance.

Advancing academic excellence on-campus and online

Fort Hays State University is dedicated to fostering a culture of academic excellence, evidenced by a range of innovative programs and accomplished students.

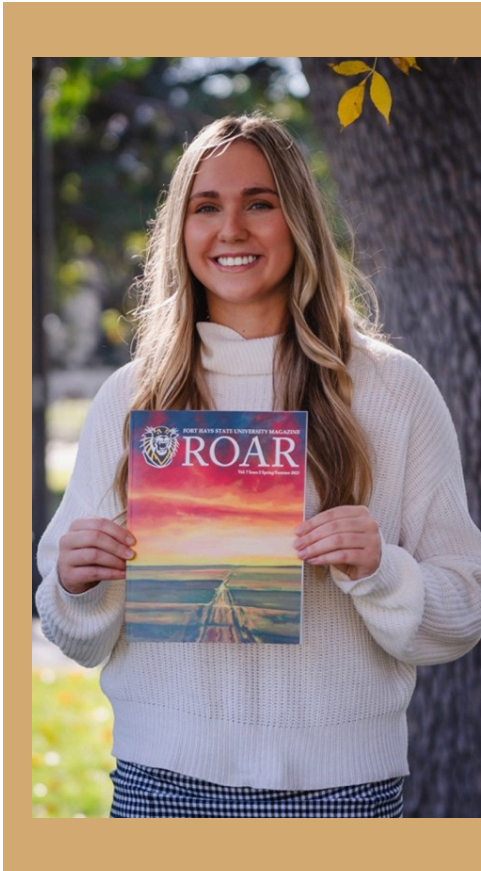
The FHSU **Honors College**, founded in 2015, is a beacon of academic distinction at FHSU that attracts students of superior academic ability and commitment to community engagement and service. In the 2023 academic year, the Honors College enrolled 126 students, reflecting a thriving community dedicated to academic excellence, leadership, and continuous growth.

Established by legislative action in 2006, the **Kansas Academy of Mathematics and Science (KAMS)** at FHSU stands as a premier early college program, offering a STEM-focused academic experience for gifted 11th- and 12th-grade students, emphasizing the university's commitment to nurturing talent.



"KAMS taught me resiliency. It helped me graduate with my Master's degree at 21 and taught me to handle challenges and obstacles by solving problems independently." - Morgan Jibowu, KAMS Class of 2016

Riley Tinder is a team captain for the Tigers Volleyball Team B and a two-time All-MIAA and MIAA Scholar-Athlete award winner. As a junior graphic design major, Riley won the annual Pencil Project portfolio competition sponsored by the prestigious advertising agency Leo Burnett Worldwide. Riley's accomplishments underscore FHSU's commitment to fostering multidimensional student success.



Brynn Wooten was FHSU's first Barry Goldwater scholar. She earned dual bachelor's degrees in geosciences and biology, along with certificates in museum studies and zoology. Recognized for her academic prowess, she secured a \$147,000 research fellowship from the National Science Foundation for Ph.D. studies in paleontology at Vanderbilt University.

"I have had so many amazing professors help me along the way. I am the biggest advocate of Fort Hays State. I stepped on campus and knew this was where I wanted to be. It is so gorgeous here. I walk around campus and look at the fossils in the walls of the buildings. Where else can you find fossils in the walls of the buildings?" - Brynn Wooten, 2023 FHSU graduate

Recent FHSU Student Scholars

Ethan Lang, a 2023 BBA graduate in Financial Planning, illustrates FHSU's commitment to holistic education. President of the Collegiate Entrepreneurs Organization, a NCAA Division II All-American track athlete, and founder of his own company, Launch Wealth, Ethan's success reflects the university's focus on developing well-rounded individuals.



Serving our local communities



The mission of the **Docking Institute of Public Affairs** is to facilitate effective public policy decision-making among governmental and nonprofit entities. The Docking Institute's Kansas Speaks survey is an annual service to Kansans, providing a look at how a representative cross-section of adults in Kansas think and feel about a wide variety of public affairs issues to benefit policy dialogue at state and local levels.



The Sternberg Museum of Natural History advances an appreciation and understanding of Earth's natural history and the evolutionary forces that impact it. With an emphasis on the natural history of the Great Plains, the museum's goals are accomplished through research, publications, collections, interpretive exhibits, and educational programs created by its staff, colleagues, and community. No other state university the size of Fort Hays State has a natural history museum comparable in size and scientific importance to the Sternberg Museum. In 2022, the museum welcomed more than 43,000 visitors.



The Kansas Small Business Development Center (SBDC) strives to provide management assistance to new and existing small businesses. They provide training to help businesses to become more informed, avoid costly mistakes, and prepare business plans. Since 1996, Fort Hays State University has been the statewide host of the program. In 2022, Kansas SBDC-FHSU assisted approximately 288 small businesses in starting 11 new businesses, bringing in over \$3.1 million in capital infusion and supporting more than 363 jobs.



The Kansas Wetlands Education Center (KWEC) is located 10 miles northeast of Great Bend at Cheyenne Bottoms Wildlife Area. KWEC is managed in cooperation with the Kansas Department of Wildlife Parks and Tourism. It is dedicated to educating the public about wetland communities, their importance, and the need for conservation and restoration. It accomplishes this through interactive exhibits and interpretation, educational programs, outreach, and fostering partnerships with cooperating stakeholders. Cheyenne Bottoms is the largest inland marsh in the United States and has received a Ramsar designation as a Wetland of international importance.

Did you know?

FHSU's **Cybersecurity Institute and Technology Incubator (CITI)** is a resource for small businesses in Western Kansas. Project-based microinternships serve a dual purpose: providing FHSU students with hands-on opportunities to work with small to medium businesses and educating those businesses on the importance of cyber security. CITI will accelerate the success of entrepreneurial companies through business support resources and services, such as management guidance, technical support, and tailored consultation.



FHSU's Management Development Center (MDC) provides workshops that improve operations and strengthen culture for various clients in Kansas. During 2022, close to 1,200 individuals across 35 different communities utilized the services of the MDC, and 52 clients returned for additional assistance.



The Information Enterprise Institute is a specialized center for expanding information assurance, cybersecurity, training, research, and consulting throughout Kansas and the world. The Institute has earned recognition as a National Center for Academic Excellence in Cyber Defense Education from the National Security Agency.



The National De-escalation Training Center - Central Region provides in-person and online training for law enforcement officers across the upper midwestern United States. The center has trained 484 Kansas law enforcement personnel representing 87 agencies, 454 students from seven states, and 89 other agencies.

In Closing...

For more than a century, Fort Hays State University has blazed a trail in higher education through innovative teaching and learning experiences, impactful research, and a commitment to service rooted in our deep ethic of care. From our home on the seemingly remote high plains of Western Kansas, we have built a remarkable university with a global reach. The unmatched value of the FHSU experience is rooted in our commitment to serving rural Kansas students, communities, and businesses. This enduring commitment drives us to offer affordable academic programs, world-class academics, and flexible on-campus and online delivery options that respond to the needs of our students. Simply put, FHSU offers the best value in education anywhere.



FORT HAYS STATE
UNIVERSITY





TIGER PACT

I AM A TIGER.
I BELONG TO A STRONG
AND UNIQUE FAMILY
WHO STRIVES FOR
GREATNESS AND SUCCESS.
I INSTILL INTEGRITY AND
CONFIDENCE WITHIN OTHERS
AS WELL AS MYSELF.
I INCORPORATE HONESTY
AND RESPONSIBILITY IN ALL I DO.
I AM THE FUTURE.

2023 FHSU IMPACT REPORT

Prepared by the Office of the
President and the Docking Institute
of Public Affairs

Dr. Tisa Mason, President

Office of the President
600 Park Street
Sheridan Hall 312
Hays, KS 67601
785-628-4231
www.fhsu.edu



Docking Institute of Public Affairs

600 Park Street
Hays, KS 67601-4099
785-628-4197
www.fhsu.edu/docking

Dr. Emily Breit, Dr. Tom Johansen,
and Dr. Samuel Schreyer